

RESEARCH

Open Access



A 3D subject-specific model of the spinal subarachnoid space with anatomically realistic ventral and dorsal spinal cord nerve rootlets

Lucas R. Sass¹, Mohammadreza Khani¹, Gabryel Connelly Natividad¹, R. Shane Tubbs³, Olivier Baledent² and Bryn A. Martin^{1,4*}

Abstract

Background: The spinal subarachnoid space (SSS) has a complex 3D fluid-filled geometry with multiple levels of anatomic complexity, the most salient features being the spinal cord and dorsal and ventral nerve rootlets. An accurate anthropomorphic representation of these features is needed for development of in vitro and numerical models of cerebrospinal fluid (CSF) dynamics that can be used to inform and optimize CSF-based therapeutics.

Methods: A subject-specific 3D model of the SSS was constructed based on high-resolution anatomic MRI. An expert operator completed manual segmentation of the CSF space with detailed consideration of the anatomy. 31 pairs of semi-idealized dorsal and ventral nerve rootlets (NR) were added to the model based on anatomic reference to the magnetic resonance (MR) imaging and cadaveric measurements in the literature. Key design criteria for each NR pair included the radicular line, descending angle, number of NR, attachment location along the spinal cord and exit through the dura mater. Model simplification and smoothing was performed to produce a final model with minimum vertices while maintaining minimum error between the original segmentation and final design. Final model geometry and hydrodynamics were characterized in terms of axial distribution of Reynolds number, Womersley number, hydraulic diameter, cross-sectional area and perimeter.

Results: The final model had a total of 139,901 vertices with a total CSF volume within the SSS of 97.3 cm³. Volume of the dura mater, spinal cord and NR was 123.1, 19.9 and 5.8 cm³. Surface area of these features was 318.52, 112.2 and 232.1 cm² respectively. Maximum Reynolds number was 174.9 and average Womersley number was 9.6, likely indicating presence of a laminar inertia-dominated oscillatory CSF flow field.

Conclusions: This study details an anatomically realistic anthropomorphic 3D model of the SSS based on high-resolution MR imaging of a healthy human adult female. The model is provided for re-use under the Creative Commons Attribution-ShareAlike 4.0 International license (CC BY-SA 4.0) and can be used as a tool for development of in vitro and numerical models of CSF dynamics for design and optimization of intrathecal therapeutics.

Keywords: Spinal subarachnoid space, Intrathecal drug delivery, 3D reconstruction, Cerebrospinal fluid, Spinal cord, Dura mater, Nerve roots, Spinal cord injury, Neurapheresis, Cerebrospinal fluid hypothermia

Background

Detailed analysis of cerebrospinal fluid (CSF) dynamics is thought to be of importance to help understand diseases

of the central nervous system such as Chiari malformation [1], hydrocephalus [2, 3] and intracranial hypertension [4]. CSF therapeutic interventions have also been investigated such as intrathecal drug delivery [5], CSF filtration or “neurapheresis” (also previously termed liquorpheresis) [6, 7] and CSF hypothermia (cooling) treatment [8]. The exact relation, if any, of CSF dynamics to these disorders and treatments is under investigation. There

*Correspondence: brynm@uidaho.edu

⁴ Department of Biological Engineering, University of Idaho, 875 Perimeter Dr. MC0904, Moscow, ID 83844-0904, USA

Full list of author information is available at the end of the article

are many opportunities for researchers to make a contribution to the field.

A significant contribution to our understanding of CSF dynamics has been made by the use of computational fluid dynamics (CFD) modeling; an engineering technique that allows detailed analysis of the CSF flow field that is not possible by MRI measurements or invasive means. In addition, CFD allows for variational analysis, where specific parameters in the model can be altered to understand their distinct contribution. Major CFD-based contributions to our knowledge of CSF physiology have been made in the areas of CSF ventricular dynamics [9], drug transport [10, 11], filtration [12], alterations in brain pathologies [13–15], spinal cord pathology [16] and wave mechanics [17, 18].

Computational fluid dynamics modeling relies on accurate representation of boundary conditions that are difficult to define because of the intricate spinal subarachnoid space (SSS) geometry, complex CSF flow field and lack of material property information about the central nervous system tissues. Each CFD modeling approach has necessitated varying degrees of boundary condition simplification with respect to anatomy and physiology. When considering anatomy, CFD models that attempt to accurately imitate the spinal geometry are generally built from subject-specific MRI scans. However, even for experts in spinal neuroanatomy, magnetic resonance (MR) imaging resolution and artifacts make subject-specific anatomical reconstruction of the SSS difficult, particularly for engineers who often have limited anatomical knowledge. Herein, we provide to the research community an open-source subject-specific 3D model of the complete SSS with idealized spinal cord nerve rootlets (NR) licensed under the Creative Commons Attribution-ShareAlike 4.0 International license (CC BY-SA 4.0). This also includes the *in vivo* measured CSF flow waveforms along the spine. The open-source model can allow multiple researchers a tool to investigate and compare results for CSF dynamics related phenomena and technologies such as pharmacokinetics of intrathecal drug distribution, neurapheresis and hypothermia.

Methods

Subject selection

A single, representative healthy, 23-year-old, female Caucasian subject was enrolled in this study. The subject had no previous history of neurological or cardiovascular disorders.

MRI CSF flow measurement protocol

All MRI measurements were obtained with a General Electric 3T scanner (Signa HDxt, software 15.0_M4_0910.a). CSF flow data were collected at three

vertebral levels, C2–C3, C7–T1 and T10–T11, using phase-contrast MRI with retrospective electrocardiogram (ECG) gating and 32 cardiac phases [14]. Each slice had a thickness of 5.0 mm and an in-plane resolution of 0.54×0.54 mm. Orientation of the slice was made perpendicular to the CSF flow direction and positioned vertically by intersection with a vertebral disk (i.e. C2–C3). A flip angle, TR, TE and VENC was used with a value of 25°, 13.4, 8.26 and 8 cm/s respectively. Detailed information on imaging parameters is provided by Baledent et al. [19].

CSF flow quantification

Oscillatory cardiac-related CSF flow was quantified for the axial locations located at the vertebral disk at the C2–C3, C7–T1 and T10–T11 vertebral levels. As detailed in our previous studies [14, 20], Matlab was used to compute the CSF flow waveform, $Q(t)$, based on integration of the pixel velocities with $Q(t) = \sum A_{pixel} [V_{pixel}(t)]$, where A_{pixel} is the area of one MRI pixel, V_{pixel} is the velocity for the corresponding pixel, and $Q(t)$ is the summation of the flow for each pixel of interest. A smooth distribution of CSF flow along the spine was achieved by interpolating CSF flow between each axial measurement location [21]. Similar to previous studies, the diastolic CSF flow cycle phase was extended in cases when necessary [22]. For correcting eddy current offsets, the cyclic net CSF flow was offset to produce zero net flow over a complete flow cycle [14].

MRI CSF space geometry protocol

To collect geometric measurements with improved CSF signal, 3D fast imaging employing steady state acquisition (3D FIESTA) was used, and acquisitions were realized with free breathing. The coils used were the HD Neck-Spine Array with 16 Channels for the spine and the 29 element phased array for the upper-neck. Images were collected in three volumes, from the top of the brain to C7, from C5 to T9, and from T9 to S5, with each section containing 140, 104 and 104 sagittal T2-weighted images respectively. The field of view (FOV) size was $30 \text{ cm} \times 30 \text{ cm} \times 7 \text{ cm}$ for the craniocervical volume, and $30 \text{ cm} \times 30 \text{ cm} \times 5.25 \text{ cm}$ for both the thoracic and lumbosacral volumes. In-plane voxel spacing was 0.547×0.547 mm and slice thickness was 1 mm with slice spacing set at 0.499 mm. Echo times (TE) were 1.944, 2.112, 2.100 and repetition times (TR) were 5.348, 5.762, 5.708 for the craniocervical, thoracic, and lumbosacral volumes respectively. Total imaging time for the three levels was ~ 45 min.

CSF space segmentation

The open-source program, ITK-SNAP (Version 3.4.0, University of Pennsylvania, USA) [23], was used to

segment the MRI data. Similar to our previous work [24], the cervical, thoracic and lumbar MR image sets were manually segmented in the axial orientation using the semi-automatic contrast-based segmentation tool. The segmented region extended from the foramen magnum to the end of the dural sac. One expert operator completed the segmentation, as our previous study showed strong inter-operator reliability of SSS geometric parameters [24]. A second expert operator reviewed the images to confirm region selection, and in areas of disagreement, discussed in detail with respect to the anatomy. Hyperintensities in the T2-weighted image sets near the epidural space were excluded from the model segmentation (Fig. 1). MRI data were not collected in high-resolution

for the entire brain, and thus the cortical and ventricular CSF spaces were not included in the model. After completion, each segmentation was exported as an .STL file with Gaussian smoothing option applied (standard deviation = 0.80 and maximum approximation error = 0.03).

Model alignment

The open source program, Blender (Version 2.77a, Amsterdam, Netherlands), was used for the majority of mesh modifications and all modeling operations in this study. After segmentation, the .STL files generated were imported into Blender. Because of the global reference coordinate set by the MRI, segmentations generated from different image series were automatically registered. However, 3D rigid

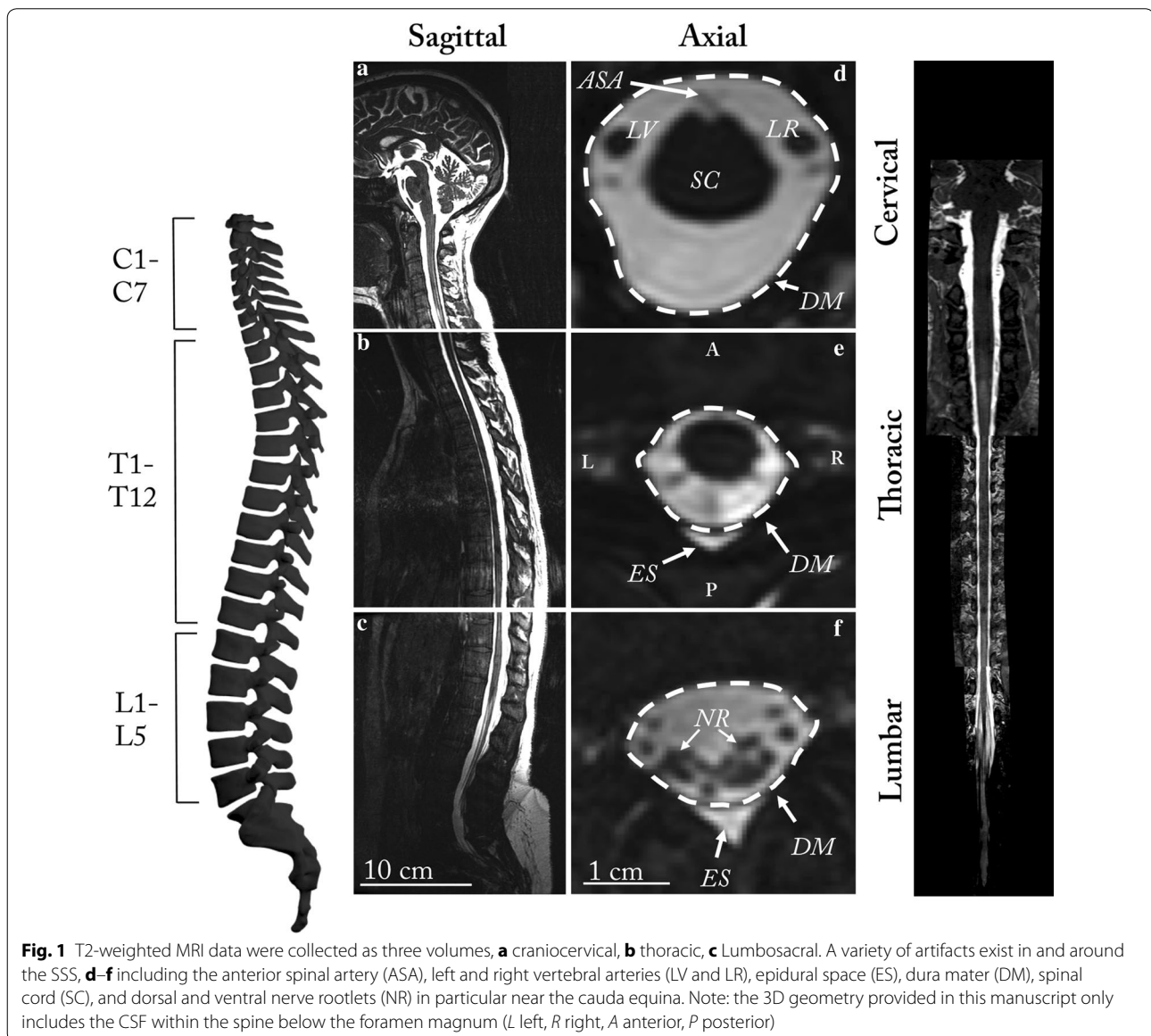


Fig. 1 T2-weighted MRI data were collected as three volumes, **a** craniocervical, **b** thoracic, **c** Lumbosacral. A variety of artifacts exist in and around the SSS, **d-f** including the anterior spinal artery (ASA), left and right vertebral arteries (LV and RV), epidural space (ES), dura mater (DM), spinal cord (SC), and dorsal and ventral nerve rootlets (NR) in particular near the cauda equina. Note: the 3D geometry provided in this manuscript only includes the CSF within the spine below the foramen magnum (*L* left, *R* right, *A* anterior, *P* posterior)

body translation (~ 5 mm maximum) was required to align each model section due to a small degree of subject movement between the MR image acquisitions. These translations were performed based on a visual best fit.

Geometry remeshing and smoothing

The following operations were completed to create a lowest-resolution semi-regular surface mesh of the spinal cord and dura while maintaining an accurate representation of the original geometry. After alignment, the triangulated .STL segmentations were converted to quadrilateral meshes using the automatic conversion tool “tris to quads” in Blender. The spinal cord and dural surfaces were separated, and an array of planes was placed along the entire spinal segmentation at a roughly orthogonal orientation to the spinal trajectory. Vertical spacing of these planes was determined by choosing an inter-plane interval (~ 5 mm) that preserved surface contours; this required a minimum of three planes to preserve a change in surface concavity. The circumferential contour of the spinal cord and dura was obtained at each plane using the “intersect (knife)” operation in Blender. The original geometry was then removed. Each surface contour was then vertically extruded ~ 1 mm. Simple circle meshes were placed at each contour using the “add circle” command, the “shrink wrap” modifier was then used to form these circles around each profile. The number of vertices in the circles wrapped to the dural and spinal cord profiles was specified to be 55 and 32 respectively. These parameters were determined based on visual inspection of the shrink-wrap fit at the largest profile diameter located at the foramen magnum. Manual adjustment of individual vertices was made to preserve a uniform vertex distribution and surface contour at each slice. To create a continuous quadrilateral mesh of both the spinal

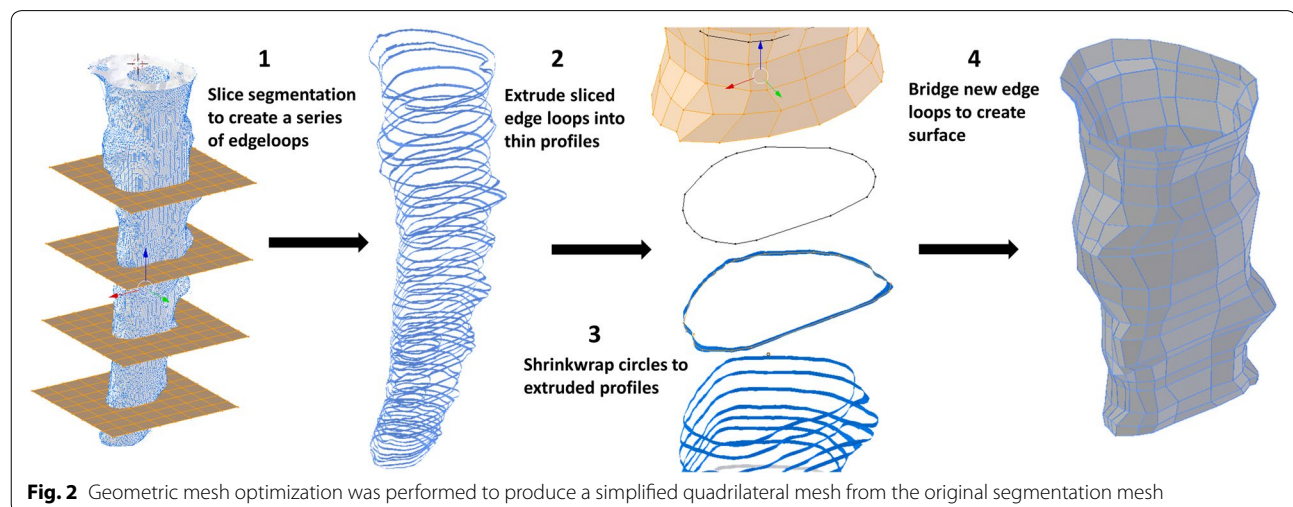
cord and dura, the “bridge edge loops” command was used between adjacent contours (Fig. 2).

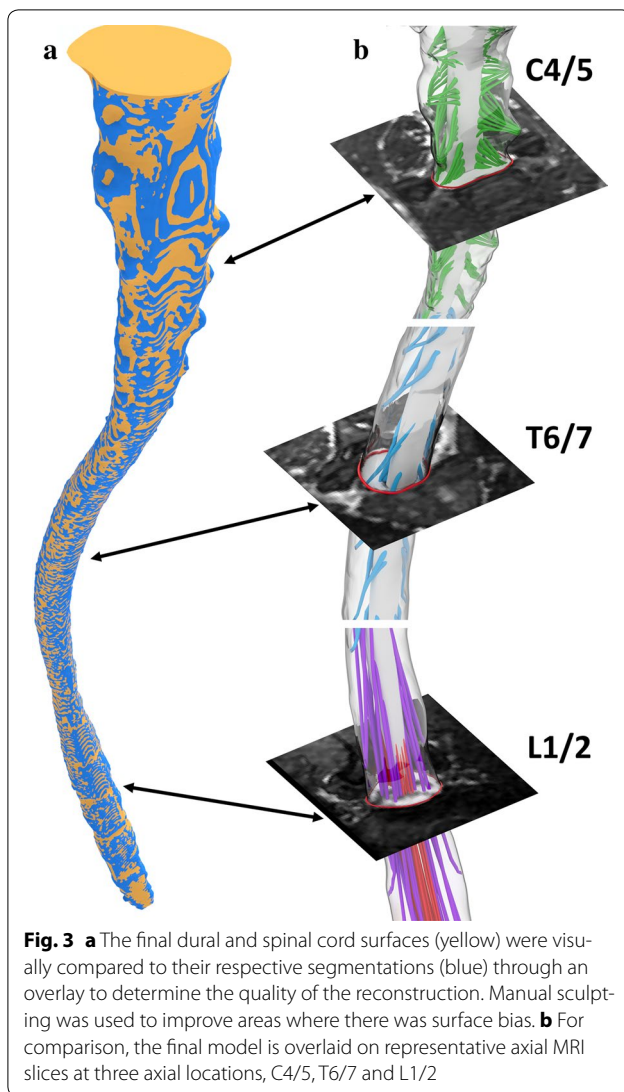
Manual adjustments were then made by sculpting the remeshed surfaces within the “sculpt mode” workspace in Blender to produce $\sim 50\%$ visual interference with the original segmentation surface (Fig. 3). To further improve surface accuracy, a combination of a shrink-wrap and “smooth” modifiers were used simultaneously. Importantly, the “keep above surface” option and “offset” options on the shrink-wrap modifier were used. The values for shrink-wrap offset and smoothing factor in their respective modifier menus must be determined by a trial and error method for each unique mesh until the desired smoothness is justified with overall volume. In this study, values of 0.04 and 0.900 were used for offset and smoothing factor respectively.

Nerve root modeling

The 31 NR pairs, starting from the craniocervical junction, were modeled using the following methodology. For each rootlet, a “circle” mesh was extruded from the SC junction to the dural exit location in Blender. The curvature, radicular line (RL) and descending angle (DA) for each rootlet were determined based on the subject specific segmentation, average cadaveric measurements from the literature and anatomic reference imagery [25–28] (Fig. 4). The exact method varied by location due to variations in the completeness of the data types; these differences are described below. Note: the 31st nerve root, or coccygeal nerve did not bifurcate into a nerve root pair until after leaving the intrathecal CSF space.

In the left side of the cervical spine, segmentations of the NR were possible to obtain directly from the anatomic MR imaging. These were imported and aligned with the existing model in Blender. A “circle” mesh was





extruded along each segmented path and the diameter of this circle was defined as the average NR diameter or thickness from cadaveric measurements for each location. Additionally, in the cervical spine the spinal entry point of each rootlet cylinder was scaled in the cranial direction ($\sim 150\%$) along the spinal cord to create a blended transition. Finally, cervical rootlets were mirrored left to right and small adjustments were made to fit them to the correct exit points on the right side of the dura. Mirroring was applied as the NR intersection location at the spinal cord and dura was nearly identical for the left and right side NR.

In the thoracic spine, segmentations were only able to inform NR entry and exit points, and by extension, DA. It is possible that NR points in the thoracic spine were difficult to visualize within this region due to image blurring stemming from respiratory-related tissue motion. NR

morphology in the thoracic spine is a steeply descending and tightly packed bundle. Therefore, to reduce unnecessary mesh complexity, a standard NR set was developed as a simplified cylinder with a diameter based on the average NR bundle size in the thoracic region. In addition to this main cylinder, a secondary cylinder was incorporated at the SC entry point to more closely imitate NR branching near the spinal cord. This cylinder extends from just below the primary rootlet entry point to a location approximately one-third of way along the primary rootlet; overall a steeply descending deltoid morphology is created. As in the cervical spine, a blended transition was created at the SC entry point for each NR. This standard NR set was mirrored left to right of the SC and duplicated along the SC for the entire thoracic region.

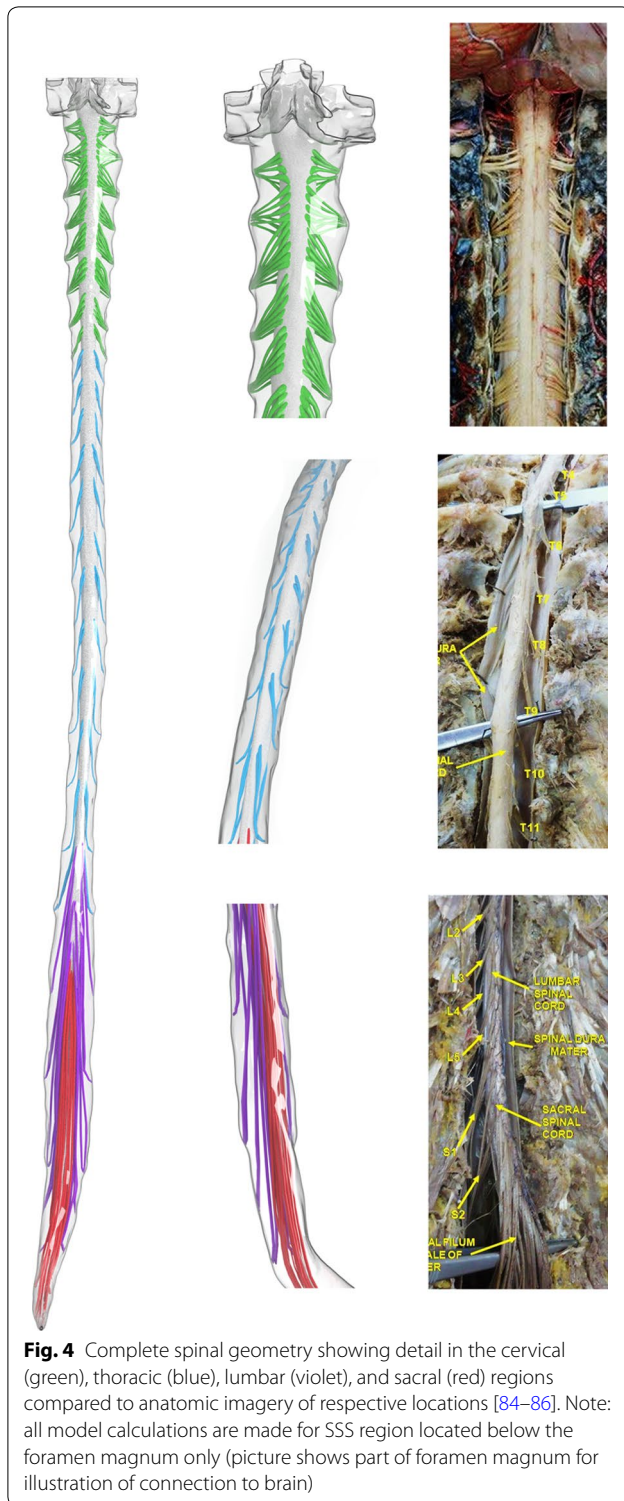
In the lumbosacral spine, the NR form the cauda equina. High MR image contrast made complete segmentations of this region possible and NR modeling was completed as in the cervical spine. NR were again simplified as a single cylinder of average diameter. Because of this, RLs for this region were not possible to define.

Geometric analysis

Geometric parameters were calculated along the complete spinal mesh at 1 mm intervals [21]. SSS cross-sectional area, $A_{cs} = A_d - A_c - A_{nr}$, was determined based on cross-sectional area of the NR (A_{nr}), SC (A_c) and dura (A_d). Hydraulic diameter for internal flow within a tube, $D_H = 4A_{cs}/P_{cs}$, was determined based on the cross-sectional area and wetted perimeter, $P_{cs} = P_d + P_c + P_{nr}$. Wetted perimeter was computed as the sum of the NR (P_{nr}), SC (P_c) and dura (P_d) perimeters. Each of these parameters was calculated within a user defined function compiled in ANSYS FLUENT (Ver. 18.1, ANSYS inc, Canonsburg, PA). Note, for geometric analysis, the coccygeal nerve (spinal nerve) was considered to be a part of the spinal cord.

Hydrodynamic analysis

The hydrodynamic environment at 1 mm slice intervals along the entire spine was assessed by Reynolds number based on peak flow rate, $Re = \frac{Q_{sys} D_H}{\nu A_{cs}}$, and Womersley number based on hydraulic diameter. For Reynolds number, Q_{sys} is the temporal maximum of the local flow at each axial interval along the spine obtained by interpolation from the experimental data and ν is the kinematic viscosity of the fluid. Similar to previous studies, CSF viscosity was assumed to be that of water at body temperature. To evaluate the presence of laminar flow, ($Re < 2300$), similar to previous studies in CSF and biofluids mechanics, Reynolds number was evaluated at peak systolic flow along the spine. Womersley number, $\alpha = \frac{D_H}{2} \sqrt{\omega/\nu}$, where ω is the angular velocity of the



volume flow waveform $\omega = 2\pi/T$, was used to quantify the ratio of unsteady inertial forces to viscous forces. This ratio was previously found to be large relative to viscous forces by Loth et al. [29]. A value greater than 5

for Womersley number indicates transition from parabolic to “m-shaped” velocity profiles for oscillatory flows [30]. CSF pulse wave velocity (PWV) was quantified as an indicator of CSF space compliance. Timing of peak systolic CSF flow rate along the spine was determined based on our previously published method [31]. In brief, a linear fit was computed based on the peak systolic flow rate arrival time with the slope being equivalent to the PWV.

Results

The final model includes the 31 pairs of dorsal and ventral NR, spinal cord with coccygeal nerve and dural wall (Fig. 4). Final values for the vertical location where the NR join into the dura (Z position), radicular line, descending angle, root thickness, and number of rootlets for both dorsal and ventral NR are provided (Table 1). The percent difference of the final remeshed dura volume compared to the original dura segmentation was 2.7% (original segmentation volume = 100.5 cm³ and a final remeshed volume = 103.2 cm³). Addition of NR reduced the final remeshed volume to 97.3 cm³. A 3D visualization of the internal geometry is shown in Fig. 5.

Geometric parameters

Total intrathecal CSF volume below the foramen magnum was 97.3 cm³ (Table 3). Volumes of the dura mater, spinal cord and 31 NR pairs were 123.0, 19.9 and 5.8 cm³ respectively. The surface areas for the dura mater, spinal cord and NR were 318.5, 112.2 and 232.1 cm² respectively. The average cross-sectional areas of the dura mater, spinal cord and NR were 2.03, 0.33 and 0.10 cm² respectively. The length of the spinal cord down to the conus and spinal dura mater were ~44.8 cm and 60.4 cm respectively. Note, geometric parameters for the spinal cord were computed based on the spinal cord with the coccygeal nerve included as one continuous structure.

3D model files

Both quadrilateral and triangulated meshes for NR, spinal cord, and dura are provided (six files in total) with Creative Commons Attribution-ShareAlike 4.0 International (CC BY-SA 4.0) license (Additional file 1, note: file units are in millimeters). The number of polygons in the quadrilateral meshes of the NR, spinal cord and dura wall was 61,749, 35,905 and 27,281 respectively for a total of 124,935 quadrangles. The number of polygons in the triangulated meshes of the NR, spinal cord, and dura were 199,372, 71,870 and 54,613 respectively for a total of 325,855 triangles. In addition, to allow reduced order modeling of intrathecal CSF flow [32], a 1D graph of model x, y, z-coordinates for the dura and spinal cord centroids are provided in a Additional file 1. This file also contains the corresponding numeric values for all

Table 1 Anatomic measurements obtained from the final 3D spine model

Nerve root #	Z position (mm from FM)	Dorsal rootlet measurements (average of left and right)				Ventral rootlet measurements (average of left and right)			
		Descending angle (°)	Radicular line (mm)	Diameter (mm)	Number of rootlets	Descending angle (°)	Radicular line (mm)	Diameter (mm)	Number of rootlets
C1	6.1	6.8	10.1	0.7	4	-7.8	8.3	0.7	3
C2	19.8	19.4	10.6	0.7	4	-8.5	11.1	0.7	4
C3	38.9	45.2	15.5	0.7	6	28.3	13.7	0.7	5
C4	55.3	42.9	17.1	0.8	5	37.0	13.3	0.8	5
C5	71.1	47.5	13.9	0.8	5	37.3	10.7	0.8	5
C6	87.3	51.9	12.6	0.9	4	39.5	12.8	0.9	4
C7	105.4	54.8	11.5	1.0	4	59.6	4.9	1.0	4
C8	118.3	68.9	7.4	0.9	2	58.6	5.2	0.9	2
T1	132.3	70.2	6.1	1.1	3	64.3	7.5	1.1	3
T2	148.7	72.3	7.2	1.1	2	69.9	6.0	1.1	2
T3	169.2	70.4	7.1	1.1	2	68.6	7.2	1.1	2
T4	187.8	69.2	8.0	1.1	2	65.8	6.1	1.1	2
T5	209.9	73.5	10.5	1.1	2	73.1	9.7	1.1	2
T6	230.5	76.8	8.1	1.1	2	76.2	6.4	1.1	2
T7	258.0	78.7	8.2	1.1	2	78.7	8.5	1.1	2
T8	277.2	79.8	8.0	1.1	2	79.8	10.5	1.1	2
T9	307.5	79.7	8.3	1.1	2	79.7	6.1	1.1	2
T10	333.3	77.7	8.5	1.1	2	77.7	8.3	1.1	2
T11	366.2	77.4	8.5	1.1	2	77.4	6.5	1.1	2
T12	401.6	74.8	10.6	1.1	1	74.8	6.9	1.1	1
L1	436.3	82.7	1.1	1.1	1	82.6	1.1	1.1	1
L2	474.9	84.7	1.1	1.1	1	85.1	1.1	1.1	1
L3	510.7	87.1	1.5	1.5	1	88.0	1.5	1.5	1
L4	543.9	87.0	1.3	1.3	1	87.6	1.3	1.3	1
L5	570.6	87.3	1.2	1.2	1	86.9	1.2	1.2	1
S1	585.5	86.9	1.0	1.0	1	87.0	1.0	1.0	1
S2	595.3	86.6	0.5	0.5	1	87.5	0.5	0.5	1
S3	599.4	86.6	0.5	0.5	1	87.0	0.5	0.5	1
S4	602.0	86.8	0.5	0.5	1	87.3	0.5	0.5	1
S5	602.6	87.3	0.5	0.5	1	87.5	0.5	0.5	1

geometric and hydrodynamic parameters at 1 mm intervals along the spine.

CSF flow

Peak-to-peak CSF flow amplitude measured at the C2–C3, C7–C8 and T10–T11 was 4.75, 3.05 and 1.26 cm³/s respectively (Fig. 6a). These were measured at an axial position relative to the model end (foramen magnum) of 4.0, 12.5, and 35.4 cm respectively. Based on the interpolated CSF flow waveform between MRI measurement locations, the maximum peak and mean CSF velocities were present at 38 mm (~ C4–C5, Fig. 7f). Minimum value of peak and mean CSF velocities occurred in the lower lumbar spine and within the thoracic spine from 390 to 410 mm (~ T7–T10, Fig. 7f).

Cerebrospinal fluid flow oscillation had a decreasing magnitude and considerable variation in waveform shape along the spine (Fig. 6a). Spatial temporal distribution of CSF flow rate along the SSS showed that maximum CSF flow rate occurred caudal to C3–C4 at ~ 40 mm (Fig. 6b). CSF pulse wave velocity (PWV) was estimated to be 19.4 cm/s (Fig. 6b).

Hydrodynamic parameters

Average Reynolds and Womersley number was 68.5 and 9.6 respectively. Womersley number ranged from 1.6 to 22.96 (Table 2, Fig. 7d). Maximum Womersley number was present near the foramen magnum ($\alpha = 22.96$). Womersley number had local minima within the cervical spine and just rostral to the intrathecal sac.

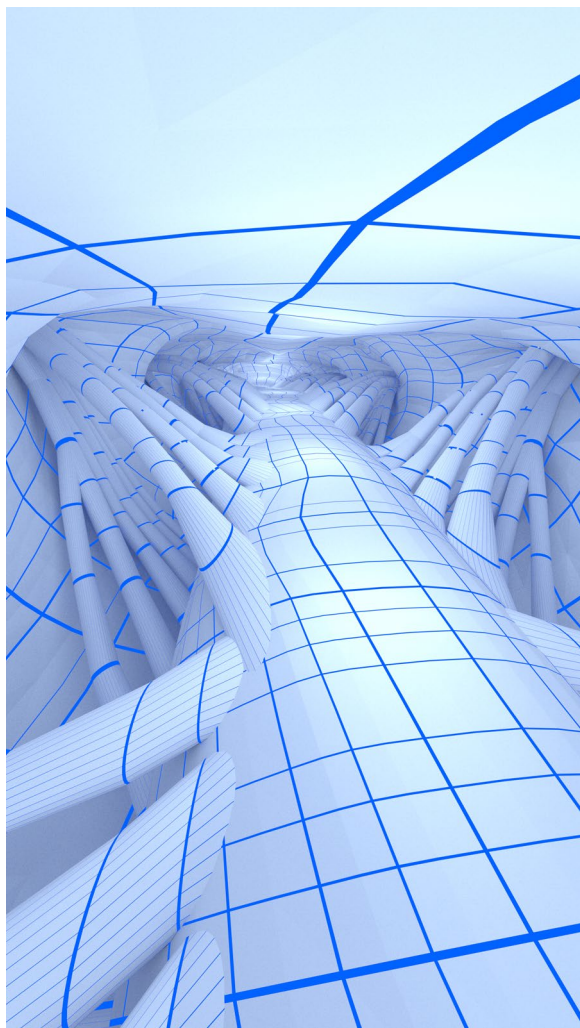


Fig. 5 Visualization of the final quadrilateral surface mesh showing internal view of the spinal cord NR in the cervical spine with view in the caudal direction

Maximum Reynolds number was 174.9 and located at C3–C4.

Discussion

The intrathecal CSF space is a complex 3D fluid-filled geometry with multiple levels of anatomic complexity, the most salient features being the spinal cord, dura mater and dorsal and ventral spinal cord NR. An accurate anthropomorphic representation of these features is needed as a tool for development of in vitro and numerical models of CSF dynamics that can be used to inform and optimize CSF-based therapeutics. In this paper, we provide a detailed and downloadable anthropomorphic 3D model (Additional file 1) of the intrathecal CSF space that is licensed for re-use under the Creative Commons

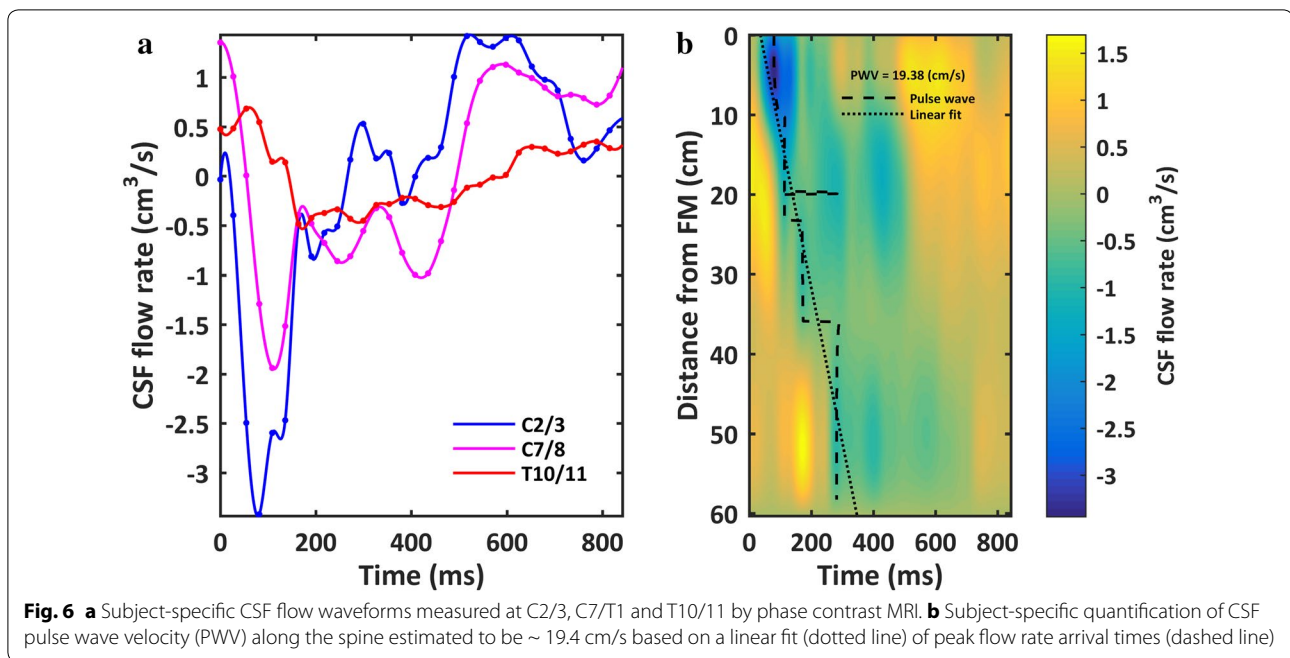
Attribution-ShareAlike 4.0 International license (CC BY-SA 4.0). CSF flow data, measured by PCMRI, is provided as a validation data set for numerical modeling. The model is characterized in terms of axial distribution of intrathecal CSF dynamics with detailed information on various hydrodynamic parameters including Reynolds number, Womersley number, hydraulic diameter and CSF velocities. Herein, we discuss the model in terms of its segmentation, remeshing, key modeling considerations and comparison to previous anatomic and modeling studies and in vivo CSF dynamics measurements.

Segmentation of the intrathecal CSF space

A variety of software exists to help reconstruct MRI DICOM image files in 3D. Many segmentation software platforms provide automatic segmentation algorithms that can deliver relatively quick visualizations but these segmentations are often not suitable to create 3D models that can be used for CFD modeling or easily exported for 3D printing [33]. In this study, we used the open-source program ITK-SNAP (“The Insight Segmentation and Registration Toolkit”, <http://www.itk.org>) that supports automatic, semi-automatic and manual approaches. The final model was constructed based on manual segmentation of each slice along the spine by an expert operator previously trained in intrathecal CSF segmentation procedures.

Despite the popularity of CFD studies conducted in the SSS, there is a lack of detailed information on intrathecal segmentation methods based on anatomic MR imaging. The craniocervical junction is highly vascularized with relatively large blood vessels that transverse the region, including the vertebral arteries (3.7 mm diameter for the left vertebral artery and 3.4 mm diameter for the right vertebral artery [34]) and the anterior spinal artery (0.3–1.3 mm diameter [35]). Spinal cord NR can sometimes be seen as dark regions crossing the SSS (Fig. 1d–f). Their length and obliqueness increases progressively moving towards the feet [36]. Denticulate ligaments are located between adjacent sets of NR in the cervical and thoracic spinal cord segments. These structures are too small to be quantified by MRI (thickness of ~ 0.1 mm) but may also appear as slightly darkened regions of SSS on each side of the spinal cord. The CSF on the anterior or posterior side of the spinal cord near the foramen magnum may appear dark in coloration due to flow void artifacts resulting from elevated CSF velocities at this region (and others along the SSS, Fig. 1). Although these regions can appear relatively dark on MR imaging, they should be considered as fluid.

Along the entire spine, the epidural space can appear hyperintense due to the presence of epidural fat (Fig. 1e–f). Care should be taken to not confuse these areas with



CSF as it can be difficult to visualize the relatively thin dura mater that separates the two spaces. This ambiguity often confounds automatic segmentation tools and thresholding should be reviewed in detail to ensure accuracy. From our experience, no presently available automated algorithm can avoid over-segmentation of epidural fat, as there can be virtually no border visible between these two regions at many locations along the spine due to MR image resolution limits that do not allow visualization of the relatively thin dura.

The cauda equina begins around the conus medullaris that is located near the lower border of the first lumbar vertebra. This structure is formed by the long rootlets of the lumbar, sacral and coccygeal nerves that run vertically downward to their exit. Similar to the spinal cord NR, ligaments and blood vessels, these small bundles of nerves are not possible to accurately quantify with the current MR image resolution through segmentation alone. In the presented model, they are modeled as curving cylinders as described in our methods with reference to cadaveric studies in the literature and visual interpretation and measurement of NR insertion at the spinal cord and dura.

Modeling considerations with small anatomy

Although the spinal cord and dura mater were easily visible, smaller structures such as NR were not clearly discernible in the MRI scans used in this study. In our previous study [36], we grossly modeled spinal cord NR as single airfoil shaped structures within the cervical spine only. For the present complete spine model for a

healthy subject, we individually modeled the number of nerve rootlets at all vertebral levels (see Fig. 4 for anatomic depiction of nerve rootlets and Table 1 for number of nerve rootlets). The nerve rootlets were each placed with reference to the high-resolution MR imaging, 3D segmented geometry and published cadaveric measurements and images in the literature. Because no single source contained enough information to fully reconstruct the NR geometry, the final model does not strictly adhere to any single set of tabular parameters, but rather, is a best judgment based on the collective information (see Table 1 for parameters). Furthermore, due to limitations in the data as well as the time intensive nature of the modeling process, NR were mirrored left to right along the spinal cord. The duplicate side was subjected to < 3.0 mm translation as necessary to best fit rootlets to the spinal and dural geometry. NR vertical positioning is only referenced by the corresponding vertebral level in the literature. Therefore, vertical positioning was based solely on segmentation data marking SSS entry and exits locations. The resulting model is subject-specific in terms of NR location and orientation, but idealized in terms of the exact structure (Fig. 4).

Volumetric differences in geometry

A large portion of this work is centered on the quadrilateral remeshing of the spinal and dural surfaces. In this case, introducing volumetric error was a primary concern during this process. This was largely compensated by selectively increasing mesh resolution in areas with higher degree of curvature while reducing resolution in

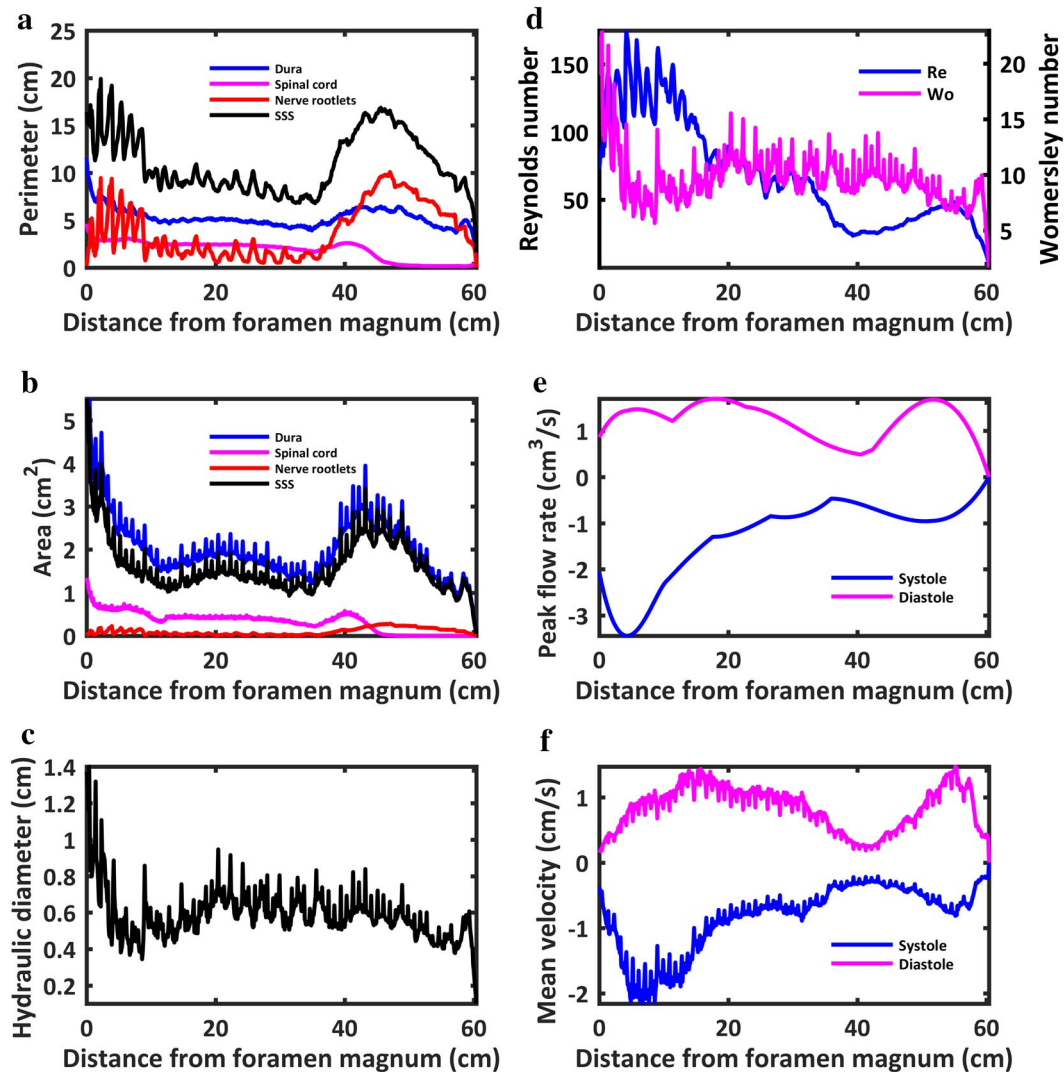


Fig. 7 Quantification of axial distribution of geometric and hydrodynamic parameters in terms of **a** perimeter, **b** area, **c** hydraulic diameter, **d** Reynolds and Womersley number, **e** peak flow rate in the caudal direction (systole) and rostral direction (diastole), **f** mean velocity of CSF flow at peak systole and diastole

locations with little curvature. However, discrepancies still occurred and it was necessary to further modify the entire surface fit as described in the “Methods”. Excluding the NR, which were not originally segmented, the final difference between segmented and remeshed SSS volumes is 2.7% (Fig. 3). Our previous study showed inter-operator volumetric error for SSS CSF segmentation to be < 2.7% [24], a value comparable to the percent difference in the remeshed volume for the present study. In an in vitro cervical SSS model, segmentation inaccuracy was quantified to be 15% larger than the original geometry STL file used to create the model [37]. In combination, these findings indicate a high-degree of segmentation and remeshing reliability, but do not rule out the possibility

for significant degree of segmentation inaccuracy. Unfortunately, the true SSS geometry is not known and therefore not possible to validate for accuracy.

Comparison of model CSF volume to measurements in the literature

While the provided model is subject-specific, it can be compared to other MRI-based studies to help understand its similarity to the general population. Overall, the provided model had a SSS volume of 97.34 cm³ and showed a strong similarity with the previous studies cited that, on average, reported SSS volume to be 90.3 cm³ [38–45]. Table 3 gives a review of studies that used MRI to quantify the volume of anatomical features within the

Table 2 Summary of geometric and hydrodynamic parameters obtained from the final 3D spine model

Parameter	Average \pm std.	Maximum	Minimum
Perimeter SC ^a (cm)	1.85 \pm 1.00	4.62	0.14
Perimeter DM (cm)	5.26 \pm 1.01	11.59	1.25
Perimeter NR (cm)	3.84 \pm 2.81	10.08	0.00
Perimeter SSS (cm)	10.96 \pm 3.12	19.91	1.6
Area SC ^a (cm ²)	0.33 \pm 0.23	1.34	0.00
Area DM (cm ²)	2.03 \pm 0.79	6.95	0.04
Area NR (cm ²)	0.10 \pm 0.08	0.28	0.00
Area SSS (cm ²)	1.61 \pm 0.65	5.62	0.04
Hydraulic diameter HD (cm)	0.59 \pm 0.14	1.40	0.10
Re	68.46 \pm 39.00	174.9	0.00
α	9.59 \pm 2.27	22.96	1.64
U _{sys} (cm/s)	-0.83 \pm 0.51	N/A	-2.16
U _{dia} (cm/s)	0.83 \pm 0.34	1.47	N/A
Q _{sys} (cm ³ /s)	-1.29 \pm 0.87	N/A	-3.44
Q _{dia} (cm ³ /s)	1.22 \pm 0.39	1.69	N/A
PWW (cm/s)	19.4	N/A	N/A

^a Average, maximum and minimum values are based 1 mm slice intervals along the entire spine including the coccygeal nerve

full spine and lumbosacral spine for healthy subjects. In collection, these published studies indicate a decreasing trend in CSF volume with age given by: $SSS_{volume(ml)} = (-0.27 \times age) + 102$ (Fig. 8). The provided model had a volume that was on the higher end of the average reported values, however it was also for a relatively young 23-year-old subject (Table 3). It should be noted that the model was based on high-resolution 0.5 mm isotropic MR images, whereas all cited studies were based on MR images with considerably lower resolution. In addition, many of these studies used axial images with ~ 8 mm slice spacing and a relatively large slice thickness.

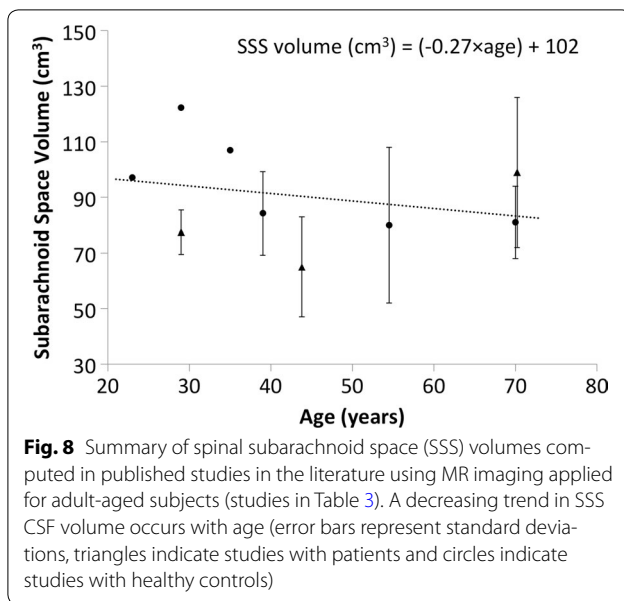
The provided subject-specific 3D model was based on a combination of subject-specific MR imaging (Fig. 1) and cadaveric measurements by Bozkurt et al. [25], Zhou et al. [26], Hauck et al. [27] and Lang et al. [28]. The cadaveric studies used to define the NR specifications were selected based on their completeness of information that included spinal cord NR descending angle, radicular line and diameter. As expected, a local enlargement of the spinal cord cross-sectional area was present near the lumbosacral (L2–S2) and cervical (C5–T1) enlargements located near 13 and 40 cm respectively below the

Table 3 Review of studies that include volumetric quantification of anatomic regions within the spine using MR imaging

Source	Region	SC (cm ³)	NR (cm ³)	SSS (cm ³)	N	Mean age	Segmentation method	Subject type
Current study (Sass et al. (2017))	Full spine	19.9	5.8	97.3	1	23	Manual	Healthy
Hogan et al. [38]	Full spine	–	–	107 ^a	2	35	Manual	Healthy
Edsbagge et al. [39]	Full spine	20	–	81 \pm 13	22	70	Semi-automated	Healthy elderly
Bagci et al. [43]	Full spine	–	–	86	1	–	Automated	Idiopathic intracranial hypertension
Hsu et al. [40]	Full spine	–	–	122	1	29	Manual	Healthy
Lebret et al. [44]	Full spine	–	–	99 \pm 27	6	70.2	Automated	Non-communicating hydrocephalus
Lebret et al. [44]	Full spine	–	–	80 \pm 28	12	54.5 ^b	Automated	Healthy
Lebret et al. [44]	Full spine	–	–	65 \pm 18	20	43.8 ^b	Automated	Communicating hydrocephalus
Alperin et al. [41]	Full spine	21.0	–	78 \pm 8	8	29	Automated	Obese women only
Levi Chazen et al. [42]	Full spine	–	–	84 \pm 15	15	39	Automated	Healthy
Current study (Sass et al. (2017))	Lumbosacral	3.8	4.0	51.0	1	23	Manual	
Hogan et al. [38]	Lumbosacral	–	7.31	49.9	25	35	Manual	
Carpenter et al. [47]	Lumbosacral	–	–	53.7 ^a	41	33	Manual	
Higuchi et al. [48]	Lumbosacral	–	–	41.7 ^a	41	30	Manual	
Sullivan et al. [45]	Lumbosacral	–	–	35.8	71	48	Automated	
Edsbagge et al. [39]	Lumbosacral	–	13	25	22	70	Semi-automated	
Martyr et al. [46]	Lumbosacral	–	9.2	31.8	16	72	Automated	
Puigdellivol et al. [49], [87]	Lumbosacral	–	–	34.4	7	37	Semi-automated	
Prats Galino et al. [50]	Lumbosacral	–	10.4	34.3	7	38	Semi-automated	
Hsu et al. [40]	Lumbosacral	–	–	53.0	1	29	Manual	

^a Indicates studies where NR volume was included in the calculation

^b Value obtained from personal correspondence with author



foramen magnum (Fig. 7). These locations corresponded to the expected enlargement due to gray matter increase within those regions.

The exact 3D structure of the 31 NR pairs and coccygeal nerve were idealized based on the literature as it was not possible to extract their exact detailed geometry directly from MR imaging. However, it was possible to place each NR pair on a subject-specific basis at the insertion point in the spinal cord and exit point at the dura (details in “Methods”). The resulting model had a total NR volume of 5.8 cm³. This value is similar to that quantified by Hogan et al. (1996) and Martyr et al. (2011) with 7.31 and 9.2 cm³ respectively [38, 46]. The relatively smaller volume in our model is likely due to the smaller size of NR between the L2–S2 levels in comparison to Hogan’s cadaveric measurements [40]. In addition to the noted wide individual variability, Hogan et al. [38] estimated NR volume assuming estimate root lengths from relatively low resolution MRI data. Other studies quantifying cauda equina volume also based their results solely on estimations from MRI segmentations [39, 45–50].

Total CSF volume in healthy adults

Total CSF volume in healthy adults has been reported to be ~ 150 mL in many standard medical textbooks [42, 51, 52] and recently published review articles [53, 54]. This value has become ubiquitous within the literature to the point of often not being cited with reference to any empirical study. Methods for CSF volume estimation by relatively crude casting techniques were originally applied [55]. These estimates were later criticized as being prone to significant degree of error [56,

57]. Review of more recent literature using non-invasive MRI-based methods indicates that total CSF volume in healthy adults to range from ~ 250 to 400 cm³ [42, 58–61]. The difference in CSF volume determined from MRI versus invasive techniques is likely an underlying reason for the discrepancy. The referenced CSF volumetric studies using non-invasive techniques with high-resolution MR imaging may provide a more accurate estimate of total CSF volume. However, invasive measurements provide a lower bound for total CSF volume. More research is needed to fully establish detailed information about CSF volumetric distribution throughout the intracranial cisterns and subarachnoid space of the brain and spine.

Comparison of 3D model with previous geometries used for CFD modeling

At present, all models of the spinal SSS rely on varying degrees of simplification or idealization, often neglecting realistic spinal canal geometry and/or microanatomy. The simplest geometries are coaxial circular annuli employed by Lockey et al. [62], Berkouk et al. [63], Hettiarachchi et al. [64] and Elliott [65] that in some cases also included pathological variations, as well as in Bertram et al. [17] which used an idealized axial distribution for SSS area. Stockman [66] used an elliptical annuli and included microanatomical features, whereas Kuttler [67] modeled an elliptical annulus based on work by Loth et al. [29] who created a SSS from realistic SSS cross sections. The axial distribution of our model spinal cord and dura shows strong similarity to Loth et al. [29], Fig. 3, with a peak SSS area located at the FM and dural sac lumbar enlargement (Fig. 7b). Hsu et al. [40], Pahlavian et al. [36] and Tangen et al. [10, 12] developed CFD models with a subject specific geometry of the SSS reconstructed from MR data. The Pahlavian and Tangen CFD models also included varying degrees of NR detail. Pahlavian idealized NR as smooth airfoil-shaped flat objects and limited the model to the cervical spine. Yiallourou et al. [68] conducted a CFD study to investigate alterations in craniocervical CSF hydrodynamics in healthy controls versus patients with Chiari malformation. In that study, NR were not included in the CFD geometry. The CFD-based velocity profile results were found to lack similarity with in vivo 4D Flow MRI measurements. It was concluded that NR or other relatively small anatomic features are likely needed to accurately reflect CSF velocities within the cervical spine.

The geometric model presented in this study contributes NR microanatomy as discreet rootlets and cauda equina within a complete subject-specific SSS geometry. The model geometry is provided in a downloadable format with the dura, spinal cord and NR as separate files

in the .STL (triangular) and .OBJ (quadrilateral) formats (six files in total). This allows modification of each surface separately for modeling purposes. For example, the model could be altered locally to increase the thecal sac volume during upright posture.

CSF dynamics quantification

The computed parameters for CSF dynamics in terms of peak flow rate, mean velocity and Reynolds number (Fig. 7) compare favorably to previous studies. The measured CSF flow rate waveforms (Fig. 6a) had similar magnitude as previous studies in the literature by Loth et al. [29], Linninger et al. [69] and Greitz [70, 71]. For those studies, average value of the peak CSF velocity at C2 vertebral level was ~ 2.5 cm/s. In the present model, peak CSF velocity at C2 vertebral level was 2.16 cm/s (Fig. 7f, towards feet). CSF pulse wave velocity (PWV), was estimated to be 19.4 cm/s in the healthy subject based on feature points of the CSF flow waveform measured along the entire spine (Fig. 6b). This value is lower than those previously reported in the literature that include 4.6 ± 1.7 m/s by Kalata et al. in the cervical spine [31] and ~ 40 m/s by Greitz in a patient [72]. It is difficult to directly compare these results with the present study, as they varied in technique, measurement location and type of subject.

Peak Reynolds number was predicted to be 175 and located within the cervical spine. This value suggests the presence of laminar CSF flow throughout the intrathecal space. However, it should be noted that the SSS is a highly complex geometry that also contains microscopic structures called arachnoid trabeculae that were not included in the flow calculations. Previous biofluids studies have shown that geometric complexity can allow flow to become partially turbulent at $Re > 600$ in a stenosis [73], at $Re 200\text{--}350$ in aneurysms [74, 75], in the heart [76] and within CSF in the SSS [77, 78]. More research is needed to define the nature of CSF flow dynamics with respect to turbulence.

Cerebrospinal fluid flow data was collected at three distinct axial locations along the spine for a single subject. Data from these three locations was spatial-temporally interpolated (Fig. 6b) and used in combination with the geometry to quantify axial distribution of CSF dynamics along the spine (Fig. 7). While only representative of the single subject analyzed, the provided parameters give insight into CSF dynamics for a single healthy subject within a complete SC model containing detailed nerve root geometry. For example, the detailed geometry showed that Reynolds number varies significantly along the spine due to the presence of NR (see Fig. 7d Reynolds number variation in cervical spine). Note: validation of

numerical models using the provided downloadable CSF flow waveform data should only take into account CSF flow rates measured at the three distinct axial locations (Fig. 6a). Interpolated values are not empirical data to be used for validation purposes.

Limitations

The provided anthropomorphic model of intrathecal CSF has several important limitations. Our model included the dorsal and ventral spinal cord NR with semi-idealized geometry that was mirrored across the spinal cord for a healthy subject. For a diseased case, such as in patients with syringomyelia or Chiari malformation, it is expected that the exact NR position may be altered. In the case of syringomyelia, the SSS has been found to narrow near the syrinx [79] and would likely result in local displacement of NR towards the dura. The present model may not be relevant for representing such a diseased case.

We sought to render the NR structures as near as possible to reality based on a combination of referencing the in vivo MR imaging and cadaveric measurements in the literature. However, the resulting model cannot be considered truly subject-specific, as the exact locations and geometry of each NR was not possible to directly visualize. Higher resolution MRI would be required to construct such a model. In addition, several additional anatomic features are missing in the model including: denticulate ligaments and tiny blood vessels that transverse the intrathecal CSF spaces. Additional work could be made to add these features to the model in an idealized way.

The provided model only includes CSF within the intrathecal space. This was due to MRI scanning time limitations. The protocol used in the present study required 45 min of scanning time to obtain the necessary high-resolution complete spine imaging. Future studies should quantify the entire CSF space geometry in detail to allow modeling of Chiari malformation and other intracranial central nervous system diseases.

Cerebrospinal fluid flow data used for calculation of CSF dynamics along the spine was measured at three axial positions along the spine. An improved method would include measurement of CSF flow at more axial levels and with higher temporal resolution. The exact reproducibility of these CSF flow waveforms could be tested by conducting a reliability study on the same subject. In this study, cardiac-related CSF flow was quantified using retrospective gated PCMRI measurements. Therefore, Fig. 7 results indicate CSF hydrodynamics under cardiac-related CSF oscillations. Impact of the respiratory cycle on CSF flow dynamics could be quantified using real-time PCMRI [80–83].

Conclusions

This study provides an anatomically realistic anthropomorphic 3D model of the complete intrathecal space based on high-resolution MR imaging of a healthy human adult female. The axial distribution of CSF dynamics within the model are quantified in terms of key hydrodynamic and geometric variables and likely indicate laminar CSF flow throughout the SSS. The model (Additional file 1) is provided for re-use under the Creative Commons Attribution-ShareAlike 4.0 International license (CC BY-SA 4.0) and can be used as a tool for development of in vitro and numerical models of CSF dynamics for design and optimization of intrathecal drug delivery, CSF filtration, CSF hypothermia and central nervous system diseases of the SC such as syringomyelia and spinal arachnoiditis.

Additional file

Additional file 1. 3D computer aided design files for the spinal cord, dura and nerve roots in .OBJ and .STL file format. Summary of geometric and hydrodynamic results for the spinal cord, dura and nerve roots in .XLSX format.

Abbreviations

3D: three-dimensional; ASA: anterior spinal artery; CFD: computational fluid dynamics; CSF: cerebrospinal fluid; DM: dura mater; DA: descending angle; ES: epidural space; FIESTA: fast imaging employing steady-state acquisition; FM: foramen magnum; FOV: field of view; LV: left vertebral artery; MR: magnetic resonance; MRI: magnetic resonance imaging; NR: nerve rootlets; PWV: pulse wave velocity; RL: radicular line; RV: right vertebral artery; SC: spinal cord; SSS: spinal subarachnoid space; TE: echo time; TR: repetition time.

Authors' contributions

Study conception and design: BAM. Acquisition of data: OB, RST, GCN, LRS, MK. Analysis and interpretation of data: BAM, LRS, RST, OB, MK, GCN. Drafting of manuscript: BAM, LRS. Critical revision: BAM, LRS, RST, OB, MK, GCN. All authors read and approved the final manuscript.

Author details

¹ Neurophysiological Imaging and Modeling Laboratory, University of Idaho, 875 Perimeter Dr. MC1122, Moscow, ID 83844-1122, USA. ² Bioflow Image, Service de Biophysique et de Traitement de l'Image médicale, Bâtiment des écoles, CHU Nord Amiens-Picardie, Place Victor Pauchet, 80054 Amiens Cedex 1, France. ³ Seattle Science Foundation, 200 2nd Ave N, Seattle, WA 98109, USA. ⁴ Department of Biological Engineering, University of Idaho, 875 Perimeter Dr. MC0904, Moscow, ID 83844-0904, USA.

Acknowledgements

None.

Competing interests

BAM has received research funding from Alcyone Lifesciences Inc., Minnetronix Inc. and Voyager Therapeutics.

Consent for publication

All authors have approved the manuscript submission. The content of this manuscript has not been published, or submitted for publication elsewhere.

Ethics approval and consent to participate

MRI data collection for this study was approved by the local institutional review board in Amiens, France and satisfied all local and international

regulations for human subject research. All data was de-identified before data transfer to the University of Idaho for analysis.

Funding

This work was supported by an Intuitional Development Award (IDeA) from the National Institute of General Medical Sciences (NIGMS) of the National Institutes of health (NIH) under Grant #P20GM1033408 and #4U54GM104944-04TBD, The National Institutes of Mental Health Grant #1R44MH112210-01A1, and University of Idaho Vandal Ideas Project.

Publisher's Note

Springer Nature remains neutral with regard to jurisdictional claims in published maps and institutional affiliations.

Received: 30 August 2017 Accepted: 1 December 2017

Published online: 19 December 2017

References

- Bunck AC, Kroeger JR, Juettner A, Brentrup A, Fiedler B, Crelier GR, Martin BA, Heindel W, Maintz D, Schwindt W, Niederstadt T. Magnetic resonance 4D flow analysis of cerebrospinal fluid dynamics in Chiari I malformation with and without syringomyelia. *Eur Radiol.* 2012;22:1860–70.
- Bradley WG Jr, Scalzo D, Queralt J, Nitz WN, Atkinson DJ, Wong P. Normal-pressure hydrocephalus: evaluation with cerebrospinal fluid flow measurements at MR imaging. *Radiology.* 1996;198:523–9.
- Woodworth GF, McGirt MJ, Williams MA, Rigamonti D. Cerebrospinal fluid drainage and dynamics in the diagnosis of normal pressure hydrocephalus. *Neurosurgery.* 2009;64:919–25 (**discussion 925–916**).
- Sklar FH, Beyer CW Jr, Ramanathan M, Cooper PR, Clark WK. Cerebrospinal fluid dynamics in patients with pseudotumor cerebri. *Neurosurgery.* 1979;5:208–16.
- Papisov MI, Belov VV, Gannon KS. Physiology of the intrathecal bolus: the leptomeningeal route for macromolecule and particle delivery to CNS. *Mol Pharm.* 2013;10:1522–32.
- Abhi V, Minnetronix I. Devices and systems for access and navigation of cerebrospinal fluid space. 2016. Patent US20160051801 A1. <https://www.google.com/patents/US20160051801>
- Finsterer J, Mamoli B. Cerebrospinal fluid filtration in amyotrophic lateral sclerosis. *Eur J Neurol.* 1999;6:597–600.
- Meylaerts SA, Kalkman CJ, de Haan P, Porsius M, Jacobs MJ. Epidural versus subdural spinal cord cooling: cerebrospinal fluid temperature and pressure changes. *Ann Thorac Surg.* 2000;70:222–7 (**discussion 228**).
- Siyahhan B, Knobloch V, de Zelicourt D, Asgari M, Schmid Daners M, Poulidakos D, Kurtcuoglu V. Flow induced by ependymal cilia dominates near-wall cerebrospinal fluid dynamics in the lateral ventricles. *J R Soc Interface.* 2014;11:20131189.
- Tangen KM, Hsu Y, Zhu DC, Linninger AA. CNS wide simulation of flow resistance and drug transport due to spinal microanatomy. *J Biomech.* 2015;48:2144–54.
- Stockman HW. Effect of anatomical fine structure on the flow of cerebrospinal fluid in the spinal subarachnoid space. *J Biomech Eng.* 2006;128:106–14.
- Tangen K, Narasimhan NS, Sierzega K, Preden T, Alaraj A, Linninger AA. Clearance of subarachnoid hemorrhage from the cerebrospinal fluid in computational and in vitro models. *Ann Biomed Eng.* 2016;44:3478–94.
- Clarke EC, Fletcher DF, Stoodley MA, Bilston LE. Computational fluid dynamics modelling of cerebrospinal fluid pressure in Chiari malformation and syringomyelia. *J Biomech.* 2013;46:1801–9.
- Martin BA, Kalata W, Shaffer N, Fischer P, Luciano M, Loth F. Hydrodynamic and longitudinal impedance analysis of cerebrospinal fluid dynamics at the craniovertebral junction in type I Chiari malformation. *PLoS ONE.* 2013;8:e75335.
- Helgeland A, Mardal KA, Haughton V, Reif BA. Numerical simulations of the pulsating flow of cerebrospinal fluid flow in the cervical spinal canal of a Chiari patient. *J Biomech.* 2014;47:1082–90.
- Cheng S, Stoodley MA, Wong J, Hemley S, Fletcher DF, Bilston LE. The presence of arachnoiditis affects the characteristics of CSF flow

- in the spinal subarachnoid space: a modelling study. *J Biomech.* 2012;45:1186–91.
17. Bertram CD, Bilston LE, Stoodley MA. Tensile radial stress in the spinal cord related to arachnoiditis or tethering: a numerical model. *Med Biol Eng Comput.* 2008;46:701–7.
 18. Elliott NSJ, Bertram CD, Martin BA, Brodbelt AR. Syringomyelia: a review of the biomechanics. *J Fluids Struct.* 2013;40:1–24.
 19. Baledent O, Henry-Feugeas MC, Idy-Peretti I. Cerebrospinal fluid dynamics and relation with blood flow: a magnetic resonance study with semiautomated cerebrospinal fluid segmentation. *Investig Radiol.* 2001;36:368–77.
 20. Martin BA, Kalata W, Loth F, Royston TJ, Oshinski JN. Syringomyelia hydrodynamics: an in vitro study based on in vivo measurements. *J Biomech Eng Trans Asme.* 2005;127:1110–20.
 21. Khani M, Xing T, Gibbs C, Oshinski JN, Stewart GR, Zeller JR, Martin BA. Nonuniform moving boundary method for computational fluid dynamics simulation of intrathecal cerebrospinal flow distribution in a Cynomolgus Monkey. *J Biomech Eng.* 2017;139:081005.
 22. Yiallourou T, Schmid Daners M, Kurtcuoglu V, Haba-Rubio J, Heinzer R, Fornari E, Santini F, Sheffer DB, Stergiopoulos N, Martin BA. Continuous positive airway pressure alters cranial blood flow and cerebrospinal fluid dynamics at the craniovertebral junction. *Interdiscip Neurosurg Adv Tech Case Manag.* 2015;2:152–9.
 23. Yushkevich PA, Piven J, Hazlett HC, Smith RG, Ho S, Gee JC, Gerig G. User-guided 3D active contour segmentation of anatomical structures: significantly improved efficiency and reliability. *Neuroimage.* 2006;31:1116–28.
 24. Martin BA, Yiallourou TI, Pahlavian SH, Thyagaraj S, Bunck AC, Loth F, Sheffer DB, Kroger JR, Stergiopoulos N. Inter-operator reliability of magnetic resonance image-based computational fluid dynamics prediction of cerebrospinal fluid motion in the cervical spine. *Ann Biomed Eng.* 2016;44:1524–37.
 25. Bozkurt M, Canbay S, Neves GF, Akture E, Fidan E, Salamat MS, Baskaya MK. Microsurgical anatomy of the dorsal thoracic rootlets and dorsal root entry zones. *Acta Neurochir.* 2012;154:1235–9.
 26. Zhou MW, Wang WT, Huang HS, Zhu GY, Chen YP, Zhou CM. Microsurgical anatomy of lumbosacral nerve rootlets for highly selective rhizotomy in chronic spinal cord injury. *Anat Rec.* 2010;293:2123–8.
 27. Hauck EF, Wittkowski W, Bothe HW. Intradural microanatomy of the nerve roots S1–S5 at their origin from the conus medullaris. *J Neurosurg Spine.* 2008;9:207–12.
 28. Lang J, Bartram CT. Fila radicularia of the ventral and dorsal radices of the human spinal cord. *Gegenbaurs Morphol Jahrb.* 1982;128:417–62.
 29. Loth F, Yardimci MA, Alperin N. Hydrodynamic modeling of cerebrospinal fluid motion within the spinal cavity. *J Biomech Eng.* 2001;123:71–9.
 30. San O, Staples AE. An improved model for reduced-order physiological fluid flows. *J Mech Med Biol.* 2012;12:1250052.
 31. Kalata W, Martin BA, Oshinski JN, Jerosch-Herold M, Royston TJ, Loth F. MR measurement of cerebrospinal fluid velocity wave speed in the spinal canal. *IEEE Trans Biomed Eng.* 2009;56:1765–8.
 32. Martin BA, Raymond P, Novy J, Baledent O, Stergiopoulos N. A coupled hydrodynamic model of the cardiovascular and cerebrospinal fluid system. *Am J Physiol Heart Circ Physiol.* 2012;302:H1492–509.
 33. De Leener B, Taso M, Cohen-Adad J, Callot V. Segmentation of the human spinal cord. *MAGMA.* 2016;29:125–53.
 34. Seidel E, Eicke BM, Tettenborn B, Krummenauer F. Reference values for vertebral artery flow volume by duplex sonography in young and elderly adults. *Stroke.* 1999;30:2692–6.
 35. Biglioli P, Roberto M, Cannata A, Parolari A, Fumero A, Grillo F, Maggioni M, Coggi G, Spirito R. Upper and lower spinal cord blood supply: the continuity of the anterior spinal artery and the relevance of the lumbar arteries. *J Thorac Cardiovasc Surg.* 2004;127:1188–92.
 36. Pahlavian SH, Yiallourou T, Tubbs RS, Bunck AC, Loth F, Goodin M, Raisee M, Martin BA. The impact of spinal cord nerve roots and denticulate ligaments on cerebrospinal fluid dynamics in the cervical spine. *PLoS ONE.* 2014;9:e91888.
 37. Thyagaraj S, Pahlavian SH, Sass LR, Loth F, Vatani M, Choi JW, Tubbs RS, Giese D, Kroger JR, Bunck AC, Martin BA. An MRI-compatible hydrodynamic simulator of cerebrospinal fluid motion in the cervical spine. *IEEE Trans Biomed Eng.* 2017. [10.1109/TBME.2017.2756995](https://doi.org/10.1109/TBME.2017.2756995)
 38. Hogan QH, Prost R, Kulier A, Taylor ML, Liu S, Mark L. Magnetic resonance imaging of cerebrospinal fluid volume and the influence of body habitus and abdominal pressure. *Anesthesiology.* 1996;84:1341–9.
 39. Edsbacke M, Starck G, Zetterberg H, Ziegler D, Wikkelso C. Spinal cerebrospinal fluid volume in healthy elderly individuals. *Clin Anat.* 2011;24:733–40.
 40. Hsu Y, Hettiarachchi HD, Zhu DC, Linninger AA. The frequency and magnitude of cerebrospinal fluid pulsations influence intrathecal drug distribution: key factors for interpatient variability. *Anesth Analg.* 2012;115:386–94.
 41. Alperin N, Bagci AM, Lee SH, Lam BL. Automated quantitation of spinal CSF volume and measurement of craniospinal CSF redistribution following lumbar withdrawal in idiopathic intracranial hypertension. *AJNR Am J Neuroradiol.* 2016;37:1957–63.
 42. Levi Chazen J, Dyke JP, Holt RW, Horky L, Pauplis RA, Hesterman JY, David Mozley P, Verma A. Automated segmentation of MR imaging to determine normative central nervous system cerebrospinal fluid volumes in healthy volunteers. *Clin Imaging.* 2017;43:132–5.
 43. Bagci AM, Ranganathan S, Gomez JR, Lam BL, Alperin N. Automated quantitation of CSF volumes in central nervous system by MRI. In: *Proceedings of the International Society for Magnetic Resonance in Medicine.* 2012.
 44. Lebrecht A, Hodel J, Rahmouni A, Decq P, Petit E. Cerebrospinal fluid volume analysis for hydrocephalus diagnosis and clinical research. *Comput Med Imaging Graph.* 2013;37:224–33.
 45. Sullivan JT, Grouper S, Walker MT, Parrish TB, McCarthy RJ, Wong CA. Lumbosacral cerebrospinal fluid volume in humans using three-dimensional magnetic resonance imaging. *Anesth Analg.* 2006;103:1306–10.
 46. Martyr JW, Song SJ, Hua J, Burrows S. The correlation between cauda equina nerve root volume and sensory block height after spinal anaesthesia with glucose-free bupivacaine. *Anaesthesia.* 2011;66:590–4.
 47. Carpenter RL, Hogan QH, Liu SS, Crane B, Moore J. Lumbosacral cerebrospinal fluid volume is the primary determinant of sensory block extent and duration during spinal anesthesia. *Anesthesiology.* 1998;89:24–9.
 48. Higuchi H, Hirata J, Adachi Y, Kazama T. Influence of lumbosacral cerebrospinal fluid density, velocity, and volume on extent and duration of plain bupivacaine spinal anesthesia. *Anesthesiology.* 2004;100:106–14.
 49. Puigdelivol-Sanchez A, Prats-Galino A, Reina MA, Maches F, Hernandez JM, De Andres J, van Zundert A. Three-dimensional magnetic resonance image of structures enclosed in the spinal canal relevant to anesthetists and estimation of the lumbosacral CSF volume. *Acta Anaesthesiol Belg.* 2011;62:37–45.
 50. Prats-Galino A, Reina MA, Puigdelivol-Sanchez A, Juanes Mendez JA, De Andres JA, Collier CB. Cerebrospinal fluid volume and nerve root vulnerability during lumbar puncture or spinal anaesthesia at different vertebral levels. *Anaesth Intensiv Care.* 2012;40:643–7.
 51. Guyton AC, Hall JE. *Textbook of medical physiology.* 9th ed. Philadelphia: WB. Saunders; 1996.
 52. Davson H, Segal MB. *Physiology of the CSF and blood-brain barriers.* Boca Raton: CRC Press; 1996.
 53. Johanson CE, Duncan JA 3rd, Klinge PM, Brinker T, Stopa EG, Silverberg GD. Multiplicity of cerebrospinal fluid functions: new challenges in health and disease. *Cerebrospinal Fluid Res.* 2008;5:10.
 54. Sakka L, Coll G, Chazal J. *Anatomy and physiology of cerebrospinal fluid.* *Eur Ann Otorhinolaryngol Head Neck Dis.* 2011;128:309–16.
 55. Last RJ, Tompsett DH. Casts of the cerebral ventricles. *Br J Surg.* 1953;40:525–43.
 56. Wyper DJ, Pickard JD, Matheson M. Accuracy of ventricular volume estimation. *J Neurol Neurosurg Psychiatry.* 1979;42:345–50.
 57. Grant R, Condon B, Lawrence A, Hadley DM, Patterson J, Bone I, Teasdale GM. Human cranial CSF volumes measured by MRI: sex and age influences. *Magn Reson Imaging.* 1987;5:465–8.
 58. Hodel J, Lebrecht A, Petit E, Leclerc X, Zins M, Vignaud A, Decq P, Rahmouni A. Imaging of the entire cerebrospinal fluid volume with a multistation 3D SPACE MR sequence: feasibility study in patients with hydrocephalus. *Eur Radiol.* 2013;23:1450–8.
 59. Courchesne E, Chisum HJ, Townsend J, Cowles A, Covington J, Egaas B, Harwood M, Hinds S, Press GA. Normal brain development and aging: quantitative analysis at in vivo MR imaging in healthy volunteers. *Radiology.* 2000;216:672–82.
 60. Coffey CE, Lucke JF, Saxton JA, Ratcliff G, Unitas LJ, Billig B, Bryan RN. Sex differences in brain aging: a quantitative magnetic resonance imaging study (vol 55, pg 169, 1998). *Arch Neurol.* 1998;55:627.

61. Pfefferbaum A, Mathalon DH, Sullivan EV, Rawles JM, Zipursky RB, Lim KO. A quantitative magnetic resonance imaging study of changes in brain morphology from infancy to late adulthood. *Arch Neurol*. 1994;51:874–87.
62. Lockey P, Poots G, Williams B. Theoretical aspects of the attenuation of pressure pulses within cerebrospinal-fluid pathways. *Med Biol Eng*. 1975;13:861–9.
63. Berkouk K, Carpenter PW, Lucey AD. Pressure wave propagation in fluid-filled co-axial elastic tubes. Part 1: basic theory. *J Biomech Eng*. 2003;125:852–6.
64. Hettiarachchi HD, Hsu Y, Harris TJ Jr, Penn R, Linninger AA. The effect of pulsatile flow on intrathecal drug delivery in the spinal canal. *Ann Biomed Eng*. 2011;39:2592–602.
65. Elliott NS. Syrinx fluid transport: modeling pressure-wave-induced flux across the spinal pial membrane. *J Biomech Eng*. 2012;134:031006.
66. Stockman HW. Effect of anatomical fine structure on the dispersion of solutes in the spinal subarachnoid space. *J Biomech Eng*. 2007;129:666–75.
67. Kuttler A, Dimke T, Kern S, Helmlinger G, Stanski D, Finelli LA. Understanding pharmacokinetics using realistic computational models of fluid dynamics: biosimulation of drug distribution within the CSF space for intrathecal drugs. *J Pharmacokinet Pharmacodyn*. 2010;37:629–44.
68. Yiallourou TI, Kroger JR, Stergiopoulos N, Maintz D, Martin BA, Bunck AC. Comparison of 4D phase-contrast MRI flow measurements to computational fluid dynamics simulations of cerebrospinal fluid motion in the cervical spine. *PLoS ONE*. 2012;7:e52284.
69. Linninger AA, Tsakiris C, Zhu DC, Xenos M, Roycewicz P, Danziger Z, Penn R. Pulsatile cerebrospinal fluid dynamics in the human brain. *IEEE Trans Biomed Eng*. 2005;52:557–65.
70. Greitz D. Cerebrospinal fluid circulation and associated intracranial dynamics. A radiologic investigation using MR imaging and radionuclide cisternography. *Acta Radiol Suppl*. 1993;386:1–23.
71. Greitz D, Franck A, Nordell B. On the pulsatile nature of intracranial and spinal CSF-circulation demonstrated by MR imaging. *Acta Radiol*. 1993;34:321–8.
72. Greitz D, Ericson K, Flodmark O. Pathogenesis and mechanics of spinal cord cysts—a new hypothesis based on magnetic resonance studies of cerebrospinal fluid dynamics. *Int J Neuroradiol*. 1999;5:61–78.
73. Ahmed SA, Giddens DP. Pulsatile poststenotic flow studies with laser Doppler anemometry. *J Biomech*. 1984;17:695–705.
74. Valen-Sendstad K, Steinman DA. Mind the gap: impact of computational fluid dynamics solution strategy on prediction of intracranial aneurysm hemodynamics and rupture status indicators. *AJNR Am J Neuroradiol*. 2014;35:536–43.
75. Valen-Sendstad K, Mardal KA, Mortensen M, Reif BAP, Langtangen HP. Direct numerical simulation of transitional flow in a patient-specific intracranial aneurysm. *J Biomech*. 2011;44:2826–32.
76. Tagliabue A, Dede L, Quarteroni A. Complex blood flow patterns in an idealized left ventricle: a numerical study. *Chaos*. 2017;27:093939.
77. Jain K, Universität Siegen. universi-Universitätsverlag Siegen. Transition to turbulence in physiological flows: direct numerical simulation of hemodynamics in intracranial aneurysms and cerebrospinal fluid hydrodynamics in the spinal canal. 1st ed. Siegen: universi-Universitätsverlag Siegen; 2016.
78. Jain K, Ringstad G, Eide PK, Mardal KA. Direct numerical simulation of transitional hydrodynamics of the cerebrospinal fluid in Chiari I malformation: the role of cranio-vertebral junction. *Int J Numer Method Biomed Eng*. 2017;33.
79. Thompson A, Madan N, Hesselink JR, Weinstein G, del Rio AM, Haughton V. The cervical spinal canal tapers differently in patients with Chiari I with and without syringomyelia. *AJNR Am J Neuroradiol*. 2016;37:755–8.
80. Chen L, Beckett A, Verma A, Feinberg DA. Dynamics of respiratory and cardiac CSF motion revealed with real-time simultaneous multi-slice EPI velocity phase contrast imaging. *Neuroimage*. 2015;122:281–7.
81. Takizawa K, Matsumae M, Sunohara S, Yatsushiro S, Kuroda K. Characterization of cardiac- and respiratory-driven cerebrospinal fluid motion based on asynchronous phase-contrast magnetic resonance imaging in volunteers. *Fluids Barriers CNS*. 2017;14:25.
82. Yatsushiro S, Sunohara S, Takizawa K, Matsumae M, Kajihara N, Kuroda K. Characterization of cardiac- and respiratory-driven cerebrospinal fluid motions using correlation mapping with asynchronous 2-dimensional phase contrast technique. In: Engineering in Medicine and Biology Society (EMBC), 2016 IEEE 38th Annual International Conference. 2016. p. 3867–70.
83. Yildiz S, Thyagaraj S, Jin N, Zhong X, Heidari Pahlavian S, Martin BA, Loth F, Oshinski J, Sabra KG. Quantifying the influence of respiration and cardiac pulsations on cerebrospinal fluid dynamics using real-time phase-contrast MRI. *J Magn Reson Imaging*. 2017;46:431–9.
84. Penrod KE. A stereoscopic atlas of human anatomy—Bassett DL. *J Med Educ*. 1959;34:75.
85. File:Slide5rer.JPG-Wikimedia Commons. <https://commons.wikimedia.org/wiki/File:Slide5rer.JPG>.
86. Filum terminale-Wikipedia. 2017. https://en.m.wikipedia.org/wiki/Filum_terminale. Accessed 1 June 2017.
87. Puigdemívol-Sanchez A, Reina MA, San-Molina J, Escobar JM, Castedo J, Prats-Galino A. Threshold selection criteria for quantification of lumbosacral cerebrospinal fluid and root volumes from MRI. *J Neuroimaging*. 2015;25:488–93.

Submit your next manuscript to BioMed Central and we will help you at every step:

- We accept pre-submission inquiries
- Our selector tool helps you to find the most relevant journal
- We provide round the clock customer support
- Convenient online submission
- Thorough peer review
- Inclusion in PubMed and all major indexing services
- Maximum visibility for your research

Submit your manuscript at
www.biomedcentral.com/submit

